



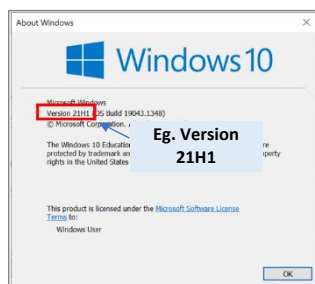
Workspace ONE User Guide for Windows 10 (Feb-2022)

Pre-requisites : Check Windows Version

To enrol your device, the supportable Windows 10 version is 1709 and above (inclusive of 18xx, 19xx, 20xx, 21xx, where xx is a two-digit number).

To check your version, click the Windows icon and type “winver”.

The Windows 10 version is shown on the pop-up window.

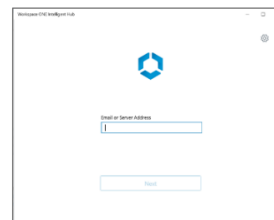


If your device runs on lower Win10 version (ie. Version 1703 or 16xx or 15xx), you will need to upgrade it by running Windows Assistant. You may also contact Workspace ONE support team to guide you in the upgrading.

Step 1. Install Intelligent Hub software

Click the Windows icon, enter and search for application “Workspace ONE Intelligent Hub”.

(a) If the application is found, click and launch it. A window titled “Workspace ONE Intelligent Hub” will be shown. Proceed to Step 2 for enrolment.



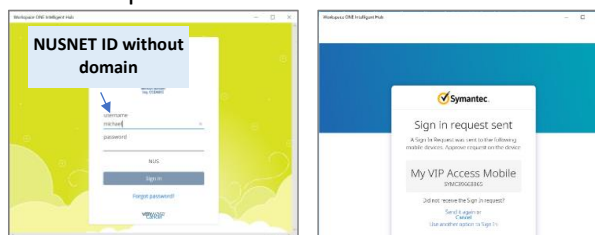
(b) If the application is not found, download Intelligent Hub software from the website <https://getwsone.com>. Step through the online instructions to install the software until you get the window shown above.

Step 2. Enrol device into WS1

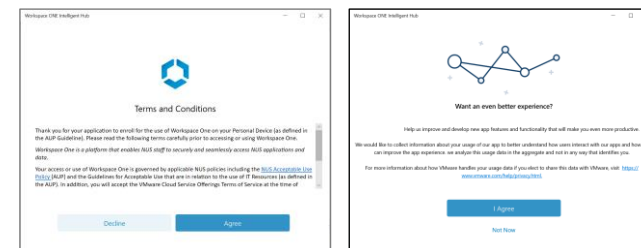
(a) Enter your full NUS email address.



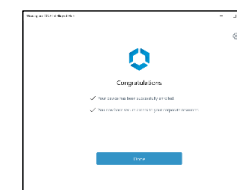
(b) Perform **2FA** login : Enter NUSNET id without domain and password.



(c) Read & **Accept** the T&C

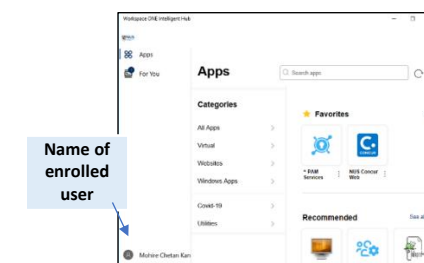


(d) Click “Done”. The device is now enrolled into Workspace ONE



Launching Intelligent Hub

Click the Windows icon, enter and search for application “Workspace ONE Intelligent Hub” and launch it.



Click Apps on the left panel to list the different categories of applications and software.